

# ART + PRACTICE

---

## PRESS RELEASE

FOR IMMEDIATE RELEASE 01/07/2019

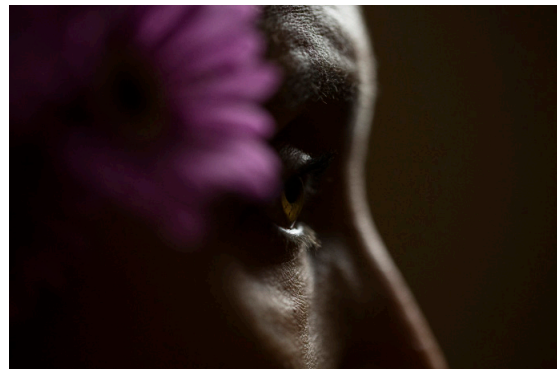
## Art + Practice and The Broad Present *Time is Running Out of Time: Experimental Film and Video from the L.A. Rebellion and Today*

**Art + Practice:** 3401 W. 43rd Place, Los Angeles, CA 90008

**Dates of Exhibition:** February 2—September 14, 2019

**Regular Hours:** Monday - Saturday, 12:00 - 6:00 p.m.

**Public Opening Reception:** Saturday, February 2, 2019, 2:00 - 5:00 p.m.



**Los Angeles, CA; January 7, 2019** - Art + Practice (A+P) and The Broad are pleased to present *Time is Running Out of Time: Experimental Film and Video from the L.A. Rebellion and Today* at Art + Practice in Leimert Park, Los Angeles, on view from February 2 to September 14, 2019. This exhibition is presented in conjunction with *Soul of a Nation: Art in the Age of Black Power 1963-1983*, on view at The Broad from March 23 to September 1, 2019.

*Time is Running Out of Time* presents early short works of Black filmmakers and video artists in Los Angeles. Central to the exhibition is a selection from the pioneering student work of the L.A. Rebellion. In the aftermath of the 1965 Watts Uprising, a group of Black diasporic students entered the University of California, Los Angeles (UCLA) School of Theater, Film and Television as part of the University's Ethno-Communications Initiative. These students collectively became known as the Los Angeles School of Filmmakers or the L.A. Rebellion. From the late-1960s to the early-1980s, they produced experimental, documentary, and narrative film and video work. The L.A. Rebellion student films display burgeoning diasporic consciousness, strong characterizations of women, and formal experimentation.

In dialogue with these films are works from following generations of filmmakers and artists in Los Angeles. Unlike the L.A. Rebellion, these younger filmmakers do not share a common educational background. Nor yet do they benefit from critical distance and its attendant historical interpretation. As individuals, they share qualities and concerns – both aesthetic and political – with the L.A. Rebellion. Across generations, themes include the robust

representation of communities, families, and lineages and the complexities of identities informed by social and political realities.

*"Soul of a Nation: Art in the Age of Black Power 1963-1983* takes as one of its focal points the significant role that Los Angeles played during this formative era in American art and history. *Time is Running Out of Time: Experimental Film and Video from the L.A. Rebellion and Today*, which we are delighted to co-present with Art + Practice, spotlights the legacy of the L.A. Rebellion filmmakers who were working at the same time. These artists created vital work that grappled with a newly-developing Black consciousness, and recognizing their contributions is essential to a fuller understanding the era addressed in *Soul of a Nation*," said Joanne Heyler, Founding Director of The Broad. "We are also pleased to provide a platform for the critical examination of subsequent generations of filmmakers and artists whose work speaks, with artistic acuity and social awareness, to the unique circumstances of our time."

*Time is Running Out of Time* takes its title from Haile Gerima's *Hour Glass* (1971). The phrase, from a song by The Last Poets, plays as a subconscious plea during the protagonist's political awakening. Abiodun Oyewole's forceful intonation underscores the urgent sociopolitical circumstances of the era as he recites, "Time is running, running running...TIME'S DONE RUN OUT!" Today, the phrase is a reminder of the continued imperative to support both the work of L.A. Rebellion filmmakers and the efforts of subsequent artists taking on important contemporary issues—issues that echo this recent past.

"Art + Practice is thrilled to collaborate with The Broad to feature the work of this multigenerational group of artists in conjunction with The Broad's presentation of *Soul of a Nation*," said Allan DiCastro, Executive Director of Art + Practice. "We hope this exhibition will continue the conversation fostered by the work included in *Soul of a Nation* as well as contextualize the significant roles that Los Angeles and our neighborhood of Leimert Park play in the art of the civil rights and Black Power movements."

Filmmakers and artists in the exhibition include Sophia Nahli Allison, S. Torriano Berry, Chris Bordenave, Ben Caldwell, Renata Cherlise, Jacqueline Frazier, Haile Gerima, Russell Hamilton, Ijoema Iloputaife, Alile Sharon Larkin, Alima Lee, Barbara McCullough, Bernard Nicolas, Philana Payton, Cauleen Smith, Martine Syms, dana washington, and Mandy Harris Williams.

*Time is Running Out of Time* is on view at Art + Practice February 2 to September 14, 2019 and is presented in conjunction with *Soul of a Nation: Art in the Age of Black Power 1963-1983* on view at The Broad from March 23 to September 1, 2019.

This exhibition is presented by Art + Practice in collaboration with The Broad, and is curated by The Broad's Jheanelle Brown, Programs Manager and Sarah Loyer, Associate Curator and Exhibitions Manager.

**Art + Practice Exhibition Space:**

3401 W. 43rd Place, Los Angeles, CA 90008

Free Admission | Regular Hours: Mon - Sat, 12:00 - 6:00 p.m.

## **PUBLIC PROGRAMS SERIES**

On the occasion of *Time is Running Out of Time*, A+P and The Broad will organize a series of public programs in Leimert Park. Participating artists include Ben Caldwell, Renata Cherlise, Russell Hamilton, Darol Olu Kae, Alile Sharon Larkin, Alima Lee, Kya Lou, Cauleen Smith, Dana Washington and others. Admission to all programs is free and no RSVPs are required.

### **Art + Practice Public Program Space:**

4334 Degnan Boulevard, Los Angeles, CA 90008  
Free Admission | Open for scheduled programs

## **CREDIT**

This exhibition is presented by Art + Practice in collaboration with The Broad, and is curated by The Broad's Jheanelle Brown, Programs Manager and Sarah Loyer, Associate Curator and Exhibitions Manager.

*Time is Running Out of Time* is made possible in part by the digitization and scholarship of the UCLA Film & Television Archive. "L.A. Rebellion: Creating a New Black Cinema" is a project by UCLA Film & Television Archive developed as part of *Pacific Standard Time: Art in L.A. 1945-1980*. The original series took place at UCLA Film & Television Archive in October – December 2011, curated by Allyson Nadia Field, Jan-Christopher Horak, Shannon Kelley and Jacqueline Stewart.

## **ABOUT ART + PRACTICE**

Conceived and founded by artist Mark Bradford, philanthropist and collector Eileen Harris Norton, and social activist Allan DiCastro, Art + Practice (A+P) is a private operating 501(c)3 foundation based in Leimert Park, Los Angeles. A+P has two areas of focus which together embody its commitment to supporting the needs of its local foster youth while also providing the community with free access to museum-curated contemporary art:

- +An exhibition space for museum-curated contemporary art and a public program space for moderated art lectures and discussions organized to coincide with exhibitions on view
  
- +An exhibition space for museum-curated contemporary art and a public program space for moderated art lectures and discussions organized to coincide with exhibitions on view

The organization occupies a nearly 20,000-square-foot campus in Leimert Park, from which it directs its programs and activities. Admission to all exhibitions and public programs is free and open to the public.

## **A+P INFORMATION**

Admission to all exhibitions and public programs is free and open to the public. To learn more visit [artandpractice.org](http://artandpractice.org).

**Hours:** Mon-Sat, 12:00 p.m. – 6:00 p.m. A+P's exhibition space is located at 3401 W. 43rd Place, Los Angeles, CA 90008. Ample metered parking available.

## ABOUT THE BROAD

The Broad is a contemporary art museum founded by philanthropists Eli and Edythe Broad on Grand Avenue in downtown Los Angeles. Designed by Diller Scofidio + Renfro in collaboration with Gensler, the museum offers free general admission and presents an active program of rotating temporary exhibitions and innovative audience engagement. The Broad is home to more than 2,000 works of art in the Broad collection, which is among the most prominent holdings of postwar and contemporary art worldwide.

The 120,000-square-foot building features two floors of gallery space and is the headquarters of The Broad Art Foundation's worldwide lending library, which has been loaning collection works to museums around the world since 1984. Since opening in September 2015, The Broad has welcomed more than 2.1 million visitors. Generous support is provided by Leading Partner East West Bank.

## THE BROAD INFORMATION

Most exhibitions are free with advance tickets or via the standby line. For more information on The Broad and to sign up for updates, please visit [thebroad.org](http://thebroad.org).

**Hours:** Tues–Wed, 11:00 a.m.–5:00 p.m.; Thurs–Fri, 11:00 a.m.–8:00 p.m.; Sat, 10:00 a.m.–8:00 p.m.; and Sun, 10:00 a.m.–6:00 p.m.

## PRESS CONTACTS

Art + Practice  
Natalie Hon  
[natalie@artandpractice.org](mailto:natalie@artandpractice.org)  
+1.323.337.6887

The Broad  
Alice Chung  
[communications@thebroad.org](mailto:communications@thebroad.org)  
+1.213.232.6200

## ART + PRACTICE

Exhibition Space  
3401 W. 43rd Place  
Los Angeles CA 90008

Monday - Saturday  
12:00 p.m. - 6:00 p.m.

Public Program Space  
4334 Degnan Boulevard  
Los Angeles, CA 90008

Open for scheduled  
programs

[artandpractice.org](http://artandpractice.org)

## CREDITS

LEFT TO RIGHT  
*Your Children Come Back to You*  
(1979). A film by Alile Sharon  
Larkin. Courtesy of UCLA Film &  
Television Archive.

Storyteller Sybil Desta in  
*Portrait of My Mother* (2016).  
Experimental short documentary  
by Sophia Nahli Allison.